

# Experimental Tests of Discrete Symmetries with Kaons and B-mesons<sup>1</sup>

Bernard Peyaud

CEA-Saclay, DAPNIA, Gif sur Yvette 91191 Cedex France

**Abstract.** During the last decades, experiments using K mesons have provided precise measurements of CP violation parameters which are important inputs for the understanding of flavour physics. They include the measurements of  $\text{Re}(\epsilon'/\epsilon)$  by NA48 and KTeV experiments using  $K_L$  and  $K_S$ , the search for CP violation in  $K^\pm \rightarrow 3\pi$  decays and rare decay processes allowing to search for new physics and to test chiral perturbation theory. Moreover, NA62, a new experiment at the CERN/SPS, will measure the branching ratio of  $K^+ \rightarrow \pi^+ \nu \bar{\nu}$  to test further the Standard Model. Experimental efforts in the kaon sector will thus continue for some time. Alternatively, in the B-meson system, there are more decay modes available, and the Standard Model makes precise predictions for CP violation in a number of these. The B-meson system is therefore a very attractive area to study CP violation and to search for new physics. The LHCb experiment at the Large Hadron Collider (LHC) and its prospects in the study of CP violation in the B-meson sector are discussed.

**Keywords:** CP violation, K and B mesons

**PACS:** 11.30.Er, 13.25.Es, 13.25.Hw, 14.40.Aq

## INTRODUCTION

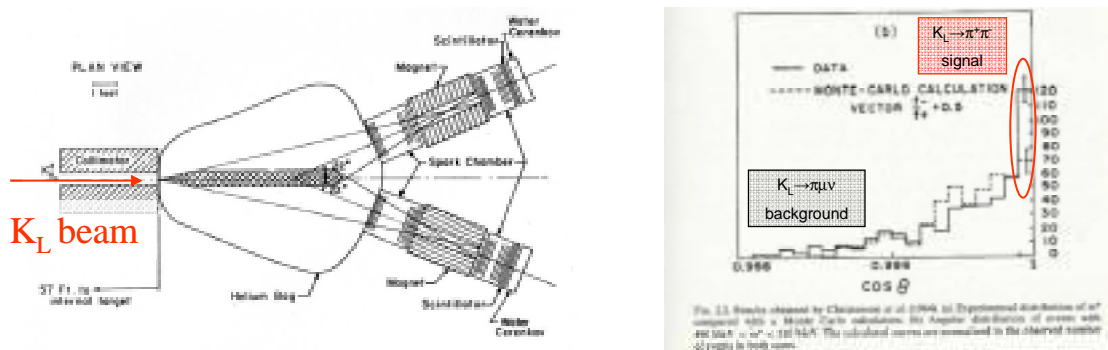
The discovery of CP violation was made in the neutral kaon system which continues to be a great resource to study this fundamental phenomenon of Nature. It was quickly established that the dominant part of the process comes from *indirect* CP violation where the physical states  $K_L$  and  $K_S$  deviate slightly from the  $K_2$  (CP=-1) and  $K_1$  (CP=1) eigenstates. This mixing is characterized by the complex parameter  $\epsilon \approx 2.3 \cdot 10^{-3} \cdot \exp^{i45^\circ}$  which fixes the size of the deviation from pure CP states. Within the Standard Model (SM)  $\epsilon$  is related to the phase  $\delta$  of the CKM mixing matrix describing the 3 generations of quarks. There is also a possibility for *direct* CP violation in  $K_2 \rightarrow \pi\pi$  decays and it is fundamental to understand this possible effect within the SM. Direct CP violation in the kaon system is parameterized by  $\epsilon'$  and corresponds to different decay amplitudes for  $K_0$  and  $\bar{K}_0$ . When expressed to first order in terms of  $\epsilon$  and  $\epsilon'$  the amplitude ratios for neutral decays  $\eta_{00} \equiv A(K_L \rightarrow \pi^0 \pi^0) / A(K_S \rightarrow \pi^0 \pi^0)$  and for charged decays  $\eta_{+-} \equiv A(K_L \rightarrow \pi^+ \pi^-) / A(K_S \rightarrow \pi^+ \pi^-)$  are given respectively by  $\eta_{00} = \epsilon - 2\epsilon'$  and by  $\eta_{+-} = \epsilon + \epsilon'$ . The measurement of the double ratio  $R = |\eta_{00} / \eta_{+-}|^2$  gives access to direct CP violation through  $R = 1 - 6 \text{Re}(\epsilon'/\epsilon)$  which has received a lot of theoretical and experimental investigations.

---

<sup>1</sup> Invited talk presented at the UAE-CERN Workshop, 26-28 November 2007, Al-Ain, United Arab Emirates

## THE DISCOVERY OF CP VIOLATION

In 1964, a remarkable experiment at Brookhaven National Laboratory (BNL) reported evidence of the long-lived neutral kaon decaying in the forbidden state  $\pi^+\pi^-$ . Under the assumption of CP symmetry the model [1] based on  $K_0$  mixing with  $\bar{K}_0$  predicts the long lifetime state  $K_2$  with eigenvalue  $CP=-1$  and therefore is not allowed to decay to  $2\pi$  which has  $CP=+1$ . In 1956, the first observation [2] of  $K_2$  was made at BNL in a bubble chamber. The typical observation was the allowed mode  $K_2 \rightarrow \pi^+\pi^-\pi^0$  and also the semileptonic modes  $K_{e3}$  and  $K_{l3}$ . None of 186 observed events could be kinematically fitted under the assumption of  $K_2 \rightarrow \pi^+\pi^-$  decay and, as expected, CP was conserved to high accuracy. In 1961, a similar bubble chamber experiment [3] conducted at JINR-Dubna reported on 225 decays with no sign of  $K_2 \rightarrow \pi^+\pi^-$  decay and the conclusion was reached that the branching ratio could not exceed 1/400. Then, in 1963, a liquid hydrogen bubble chamber was placed in a neutral beam at the BNL Cosmotron and 252  $K_2$  decays were observed. These events were analyzed as  $K_2 \rightarrow \pi^+\pi^-$  decays through their angular distribution where a forward peak of 19 events was given the interpretation of “anomalous regeneration” [4]. This perplexing result was one of the reasons that led the Princeton team in April 1963 to submit a Letter of Intent for an experiment based on an existing apparatus, a double-armed spectrometer with spark chambers and Cerenkov counters as shown in Figure 1. The BNL Directorate gave agreement in May 1963 and the apparatus was installed and ready on June 2<sup>nd</sup>. The run lasted until the end of July with 70000 triggers taken for regeneration studies, 47000 triggers for CP limit and 23000 triggers to study the “Adair effect” on hydrogen. By looking at mass slices below, above and at the  $K_0$  mass a peak in the forward direction was detected during a first analysis made between October and December 1963. The team decided to reanalyze the events with more accuracy in the measurement of the spark positions. From January to April 1964 many attempts were made to “kill” the peak but none was successful. One year after they had submitted their proposal the Princeton group demonstrated to the scientific community that the  $\pi^+\pi^-$  decay of the long lived kaon was occurring with a branching ratio of  $(2 \pm 0.4) \times 10^{-3}$ . This unexpected discovery [5] was “made with a simple apparatus, designed to ask the right question of nature and received a clear response”.

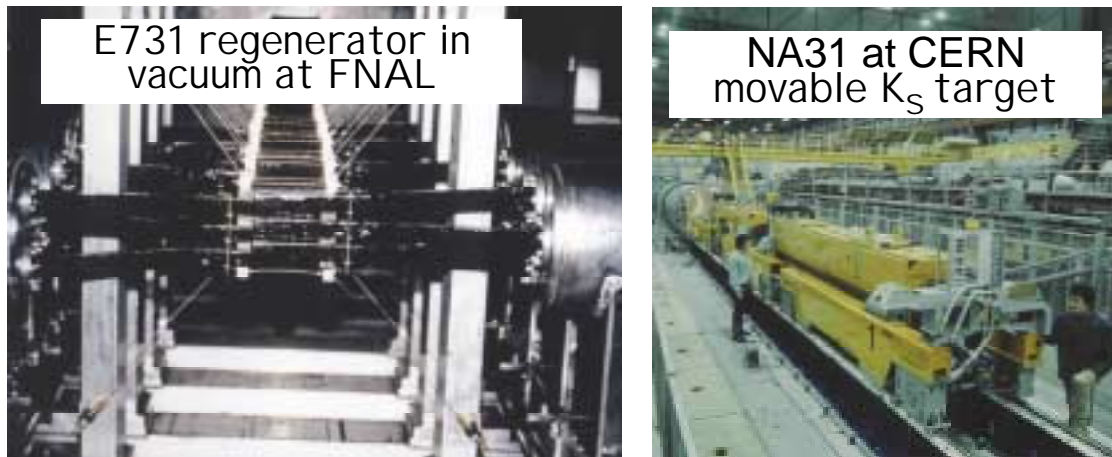


**FIGURE 1:** Schematics of the experiment with which the Princeton group discovered CP violation at BNL. The peak at  $\cos\theta = 1$  shows the evidence for  $K_L \rightarrow \pi^+\pi^-$ .

## THE QUEST FOR DIRECT CP VIOLATION

### Super weak theory is wounded by NA31

If  $\epsilon$  is the only source of CP violation we would expect  $\eta_{00}=\eta_{+-}$  as predicted by the super-weak hypothesis [6]. In 1979 a proposal was made at Fermilab to measure the ratio R of CP violating rates  $|\eta_{00}|^2$  and  $|\eta_{+-}|^2$  to a precision better than 1%. The E617 experiment achieved 3% accuracy only but paved the way for the next measurement made by E731. The principle of the experiment relies on the use of two neutral beams with one of them incident on a regenerator (Figure 2a) thus allowing simultaneous study of  $K_S/K_L$  decay products in the apparatus. The most important parts of the detector are drift chambers to measure the momenta of charged particles, lead-glass electromagnetic calorimeter to measure  $\gamma$ 's from  $\pi^0$  and muon hodoscope. Another proposal was made in 1980 at CERN with a different principle where neutral and charged rates are measured simultaneously in the NA31 detector which consist of proportional chambers to measure the charged directions, liquid argon photon calorimeter, hadron calorimeter and muon veto. The simultaneous  $K_S$  and  $K_L$  beams are obtained by using a movable target (Figure 2a) inside a long vacuum tunnel. Both detectors use high performance electromagnetic calorimeters (i.e. good  $\gamma$  position and energy resolution) in order to reject the main background from  $3\pi^0$  decays in the neutral mode. In the charged mode E731 achieves good background rejection of  $K_{e3}$  by combining momentum measurement in the drift chamber spectrometer and energy measurement in the electro-magnetic calorimeter (E/p identification of electron) whereas NA31 obtains good  $\pi$  identification with the hadronic calorimeter.



**FIGURE 2:** a) The E71 carbon regenerator used at FNAL and b) the NA31  $K_S$  target at CERN.

At the concluding talk of the Blois Conference in 1989 the status of the analysis of the two experiments was the following:

NA31	$\text{Re}(\epsilon'/\epsilon) = (33 \pm 11) \times 10^{-4}$ ,
E731 (very preliminary)	$\text{Re}(\epsilon'/\epsilon) = (-10 \text{ to } 10 \pm 15) \times 10^{-4}$ ,

The evidence of a non-zero effect was to some extent diluted by the variance between the results of NA31 and E731 and it was concluded that the experiments must be continued to still higher accuracy.

The magnitude of direct CP violation signal was still contentious when the analysis of the two experiments [7] , [8] were completed in 1996 with the final results:

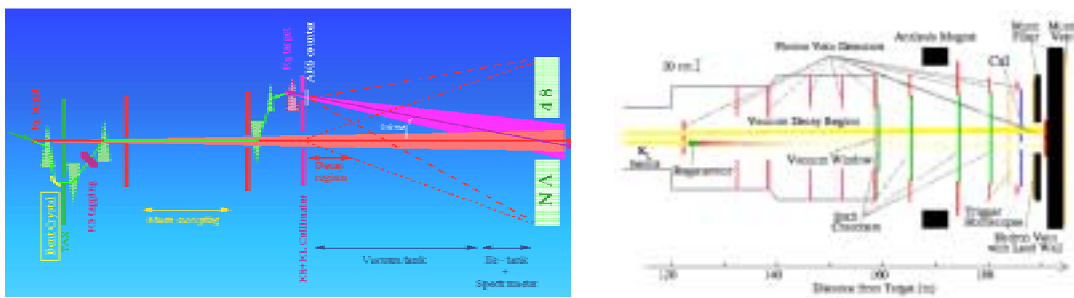
$$\begin{array}{ll} \text{NA31} & \text{Re}(\epsilon'/\epsilon) = (23 \pm 6.5) \times 10^{-4}, \\ \text{E731} & \text{Re}(\epsilon'/\epsilon) = (7.4 \pm 6.5) \times 10^{-4}. \end{array}$$

The next round of experiments on  $\text{Re}(\epsilon'/\epsilon)$  had already started in the early 90's at CERN with NA48 and at FNAL with KTeV.

### The experimental fix of $\epsilon'/\epsilon$

The NA48 and KTeV experiments were designed to measure  $\text{Re}(\epsilon'/\epsilon)$  with an accuracy of  $\leq 2 \times 10^{-4}$ . In order to reach this requirement the limiting mode  $K_L \rightarrow \pi^0 \pi^0$  must contain at least 4 million events and the systematic errors be kept at very small levels.

The principle of the NA48 experiment is to use almost collinear  $K_L$  and  $K_S$  beams pointing at the centre of the detector and having similar momentum spectra ( $\langle P_K \rangle = 110 \text{ GeV}/c$ ) and to detect all 4 decay modes at the same time. Large statistics require high-intensity beams and therefore high-rate capability and performance for the detector elements. The identification of the neutral/charged mode is made with high-resolution photon-calorimeter/spectrometer and  $K_L$  and  $K_S$  are separated by tagging. By applying a lifetime weighting procedure to the  $K_L$  decays in both modes one reduces almost completely the acceptance differences with  $K_S$  due to their lifetimes. The weighted vertex distributions of  $K_L$  are made similar to the  $K_S$  ones thus bringing the experiment close to “gedanken” situation with  $K_L/K_S$  coming from the same source.



**FIGURE 3:** a) the  $K_L/K_S$  beam line used at CERN by NA48  
b) the  $K_L$  and regenerated  $K_S$  used at FNAL by KTeV.

A schematic view of the neutral kaon beam lines and of the detector layout is shown in Figure 3a. The decay region extends over 90m inside a vacuum tank terminated by a thin Kevlar window. It is followed by the detector elements installed between 216m to 255m downstream of the  $K_L$  target. A magnetic spectrometer is inside a helium tank and is followed by a hodoscope to trigger on the charged mode, a liquid krypton (LKr) calorimeter, a hadronic calorimeter, and a muon detector.

The principle of the KTeV experiment is to use a double  $K_L$  beam and to produce  $K_S$  by regeneration of one of them as shown in Figure 3b. The state of the art detector is a photon calorimeter made of pure CsI crystals. The decay region is shorter here owing to the fact that kaons are less energetic ( $\langle P_K \rangle = 70 \text{ GeV}/c$ ). For both detectors the mass resolution for  $K_{L,S} \rightarrow \pi^+ \pi^-$  decays is  $\sim 2 \text{ MeV}/c^2$  and the time resolution of the hodoscopes is  $\sim 200 \text{ ps}$ .

Direct CP violation has been measured [9] , [10] by both experiments (Figure 4a) and  $\text{Re}(\epsilon'/\epsilon)$  is now known to be  $(16.3 \pm 2.2) \cdot 10^{-4}$ . This non-zero value established with 7 standard deviations provides a second number to describe CP violation in the neutral kaon system. It translates in the matter antimatter asymmetry ratio:

$$\frac{\Gamma(K^0 \rightarrow \pi^+ \pi^-) - \Gamma(\bar{K}^0 \rightarrow \pi^+ \pi^-)}{\Gamma(K^0 \rightarrow \pi^+ \pi^-) + \Gamma(\bar{K}^0 \rightarrow \pi^+ \pi^-)} = (5.04 \pm 0.82) \times 10^{-6}$$

These successes have been made possible by a remarkable sequence of ambitious experimental programs in Europe and USA as summarized in Table 1.

**TABLE 1.** Data statistics of experiments at FNAL and CERN

Year	experiment	$K_L \rightarrow 2\pi$	Background	Data volume
1985	E617 FNAL	3,152	$\sim 11.3\%$	10GB
1988	E731 test FNAL	6,950	$\sim 5\%$	
1988	NA31 CERN	109,000	$\sim 4\%$	
1990	E731A FNAL	52,000	$\sim 5\%$	
1993	E731 Final FNAL	410,326	$\sim 5\%$	100GB
1993	NA31 Final CERN	428,000	$\sim 2.7\%$	
2001	KTeV FNAL	10,000,000	$\sim 0.48\%$	
2001	NA48 CERN	5,000,000	$\sim 1.16\%$	100TB

On the theoretical side  $\epsilon'/\epsilon$  is very hard to calculate because the sensitivity is in the sizes and phases of similar amplitudes [11] There is agreement that direct CP violation effect is much smaller than the indirect one. Despite huge efforts,  $\epsilon'/\epsilon$  is not yet computed reliably but improvements are expected from lattice calculation

### Charged kaons: another attack by NA48

While at very small level, direct CP violation is also expected for charged kaon decays in the standard model, and NA48 has used intense  $K^\pm$  beams in 2003/04 to measure the Dalitz plot properties of the  $\pi^\pm \pi^+ \pi^-$  and  $\pi^\pm \pi^0 \pi^0$  decays modes. If CP invariance holds strictly the matrix elements  $|\mathcal{M}(u,v)|^2 \propto 1 + g^+ u + h u^2 + k v^2$  for  $K^\pm$  must be identical with  $g^+ = g^-$  whereas the SM asymmetry  $A_g = (g^+ - g^-) / (g^+ + g^-)$  is expected to be in the range ( $10^{-5}$  to  $10^{-4}$ ). This precision measurement [12] was done by NA48 with final samples of  $3.1 \times 10^9$   $K^\pm \rightarrow \pi^\pm \pi^+ \pi^-$  decays and  $91 \times 10^6$   $K^\pm \rightarrow \pi^\pm \pi^0 \pi^0$  decays giving respectively the following results [13]:

$$A_g(\pi^\pm \pi^+ \pi^-) = (-1.5 \pm 2.1) \cdot 10^{-4} \text{ and } A_g(\pi^\pm \pi^0 \pi^0) = (-1.5 \pm 2.1) \times 10^{-4}$$

Compared to previous experiments these results are 10 times more accurate and the errors are dominated by statistics. No CP violation was found but the window to search for new physics has been reduced dramatically (Figure 4b). J. Cronin’s hope of 1980 “that at some epoch, perhaps distant, this cryptic message from Nature will be deciphered” has been significantly but partially satisfied.

Another important exploration of CP violation is being prepared by experiment NA62 at CERN [14]. This is the search for the very rare decay  $K^+ \rightarrow \pi^+ \nu \bar{\nu}$  which is a CKM suppressed process occurring through Flavour Changing Neutral Current. It is very clean theoretically since short distance contributions are dominant and hadronic matrix elements are obtained from the measured decay  $K^+ \rightarrow \pi^0 \nu \bar{\nu}$ . The SM prediction of the branching ratio is  $BR(K^+ \rightarrow \pi^+ \nu \bar{\nu}) = (8.0 \pm 1.1) \times 10^{-11}$  for which the experimental measurement made by E787/949 is  $BR(K^+ \rightarrow \pi^+ \nu \bar{\nu}) = (1.47^{+1.30}_{-0.89}) \times 10^{-10}$  (3 events).

The NA62 experiment aims at observing  $O(100)$   $K^+ \rightarrow \pi^+ \nu \bar{\nu}$  events with a background level not exceeding 10%. The sensitivity to new physics is again the driving force of this enterprise.

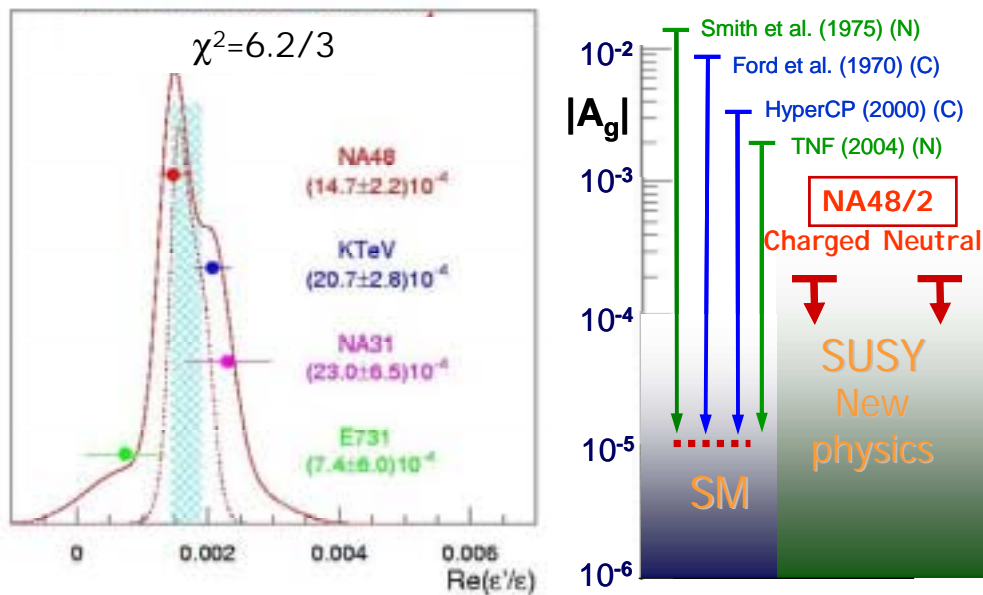
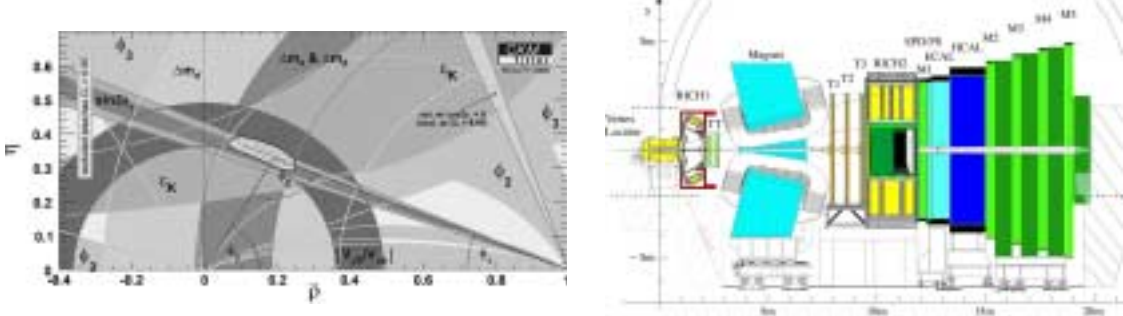


FIGURE 4: a) Direct CP violation measurements of  $Re(\epsilon'/\epsilon)$   
b) Limits on  $A_g$  from  $K^\pm$  asymmetry measurements.

## THE USE OF B MESONS

Neutral kaon mixing has played a major role in understanding how the CP violating phase  $\delta$  enters the SM. Similarly  $B_d$  mixing was the first experimental phenomenon to correctly anticipate the large value of the top quark mass and later the precise measurements of many different B-meson decay modes obtained in the B-factories, allowed the CKM picture of mixing and CP violation to be verified at the few per cent level. The unitarity triangle (Figure 5a) is known today with good accuracy from the

measurement of  $|V_{cb}/V_{ub}|$ ,  $\Delta m(B_d)$ , and the observation on  $\Delta m(B_s)$ . While these quantities are CP-conserving, they imply non-zero angles of the triangle, and therefore CP violation.



**FIGURE 5:** a) The impact of B physics on the unitarity triangle  
b) The LHCb detector dedicated to B physics at LHC.

The LHCb [15] experiment (Figure 5b) will soon complement and extend the studies made at B factories. This unique detector will probe CP violation in the  $D^0$  system at the  $10^{-3}$  level and flavour physics in the quark sector will continue to be an important research direction. Among the key elements of the detector are the Si vertex detector that will measure charged particle tracks, and the RICH detectors, that will identify particles. The shopping list of LHCb includes:

- *Bd and Bs mixing effects (including CPV) in tree decays*
- *CPV in pure hadronic  $b \rightarrow s$  penguin transitions*
- *Direct CPV (angle  $\gamma$ ) in  $B \rightarrow DK$  tree decays*
- *CPV in  $B \rightarrow h+h-$  decays (trees + penguins)*
- *CPV (angle  $\alpha$ ) in  $B \rightarrow \rho\pi, \rho\rho$  decays (trees + penguins)*
- *$b \rightarrow sy$  and  $b \rightarrow sl+l-$  transitions (electromagnetic penguins)*
- *Pure leptonic B decays*
- *Charm and charmonium*

These measurements will significantly improve the accuracy of the unitarity triangle. With high luminosities LHCb may well succeed in finding decays with rates above the SM predictions thus pointing to phenomena requiring new physics.

## CONCLUSIONS

The non-invariance of the fundamental interactions under the discrete symmetries C, P and T has played a central role in the development of the SM. Quantitatively, the measurements of CP violation in several channels, both with kaons and b mesons, is perfectly consistent with the SM, and in particular with one single complex phase  $\delta$  as the dominant source of CP violation in the quark sector.

The measurement of very rare FCNC decays such as  $K_L^0 \rightarrow \pi^0 \nu \bar{\nu}$ ,  $K^+ \rightarrow \pi^+ \nu \bar{\nu}$ , or  $B_{d,s} \rightarrow l^+ l^-$ , the detection of new CP-violating phases in heavy-flavour decays, will undoubtedly provide precious information on the effect of these new phenomena on low-energy physics, and perhaps give important constraints on yet unobserved heavy particles.



## ACKNOWLEDGMENTS

It was a pleasure to participate to this first UAE-CERN workshop held in Al-Ain in order to help this region of the world deciding upon how to organize their participation in the adventure of finding things yet unknown to mankind. I thank the organizers for their wonderful effort and the invaluable help and kindness that they provided to their guests.

## REFERENCES

1. M. Gell-Mann and A. Pais, *Phys. Rev.* **97**, 1387, (1955).
2. K. Landé *et al.*, *Phys Rev.* **103**, 1901 (1956).
3. D. Neagu *et al.*, *Phys Rev. Lett.* **6**, 552 (1961).
4. L. B. Leipuner *et al.*, *Phys Rev.* **132**, 2285 (1963).
5. J. H. Christenson, J. W. Cronin, V.L. Fitch and R. Turlay, *Phys Rev Lett.* **13**,138 (1964).
- 6 L. Wolfenstein, *Phys. Rev. Lett.* **13**, 562, (1963).
- 7 G. D. Barr *et al.*, *Phys. Lett. B* 317, 233, (1993).
- 8 L. K. Gibbons *et al.*, *Phys.Rev. Lett.* **70**, 1203, (1993).
- 9 A. Alavi-Harati *et al.*, *Phys. Rev.* D67, 012005 (2003).
- 10 J. R. Batley *et al.*, *Phys. Lett. B* 544, 97, (2002).
- 11 Selected theory papers: <http://www.phy.bnl.gov/e949/papers/theory.html>.
- 12 S. Balev for NA48 Collaboration., *Rencontres de la Vallée d'Aoste, La Thuile.* (2006),
- 13 J. R. Batley *et al.*, *Phys. Lett. B* 638, 22, (2006).
- 14 Proposal to measure the rare decay  $K^+ \rightarrow \pi^+ \nu \bar{\nu}$  at the CERN SPS, CERN-SPSC-2005-013, SPSC326.
- 15 LHCb Home page: <http://lhcb.web.cern.ch/lhcb>